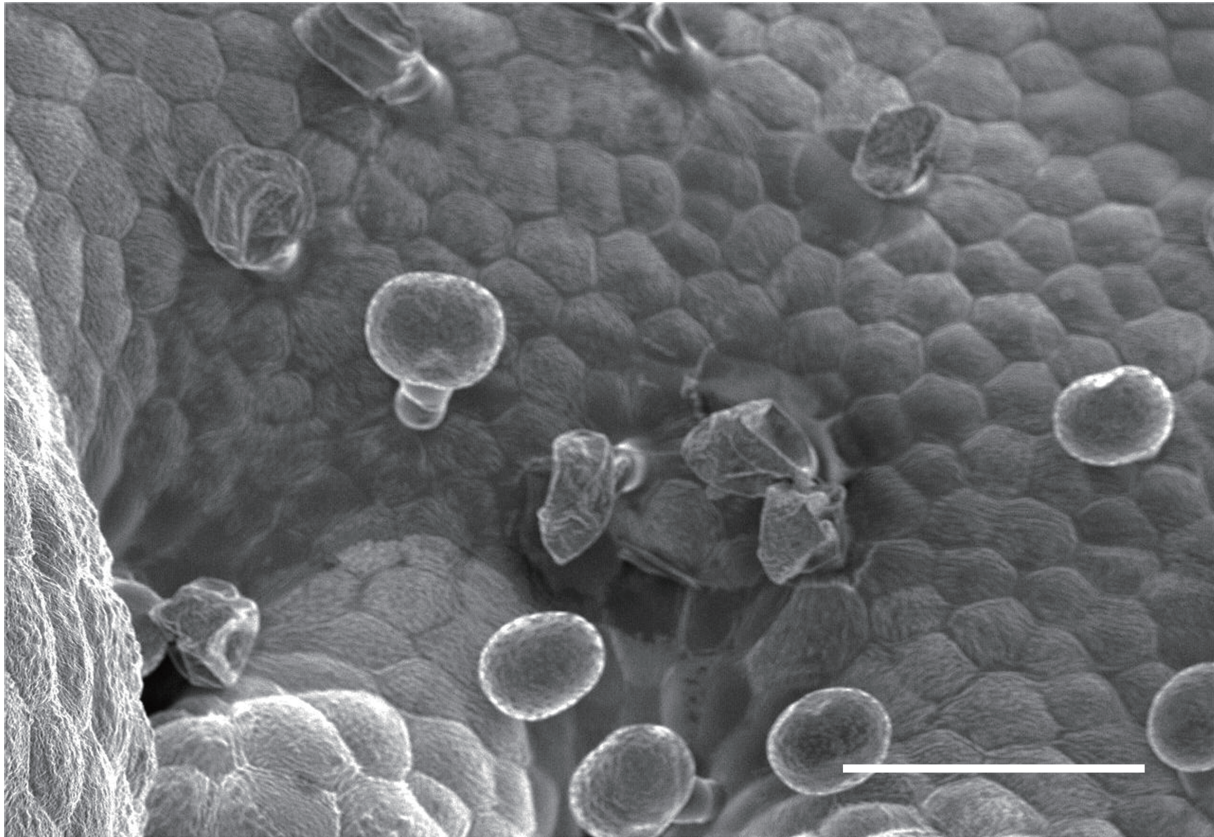


**Supplemental Figure 1. Expression of the *CpTCP1SRDX* transgene in transgenic plants**

Expression of *CpTCP1SRDX* in two selected transgenic lines of “Mild” phenotype (Nos. 59 and 26) growing in the closed and special-netted greenhouse was analyzed using RT-PCR. The expression of each gene in the non-transgenic plant WP (lane cont.) was also examined. Total RNAs were isolated from leaves of 35S:*CpTCP1SRDX* and WP plants. *CpTCP1SRDX* transgene was amplified using two specific primers; the forward primer was designed from the *CpTCP1* gene sequence (5'-GAATGGGAGAAGCTCTGACGCC-3'), and the reverse primer from the SRDX repression domain sequence (5'-TTAAGCGAAACCCAAACGGAGTTCTAG-3'). RT-PCR conditions were the same as described in the section “Expression analysis of endogenous *CpTCP1*” of Materials and methods. *ACT*, *ACTIN*.



**Supplemental Figure 2. The young leaf surface of WP**

The epidermal cell morphology of the young leaf in non-transgenic plant by SEM. Scalebar indicates 100 $\mu$ m.