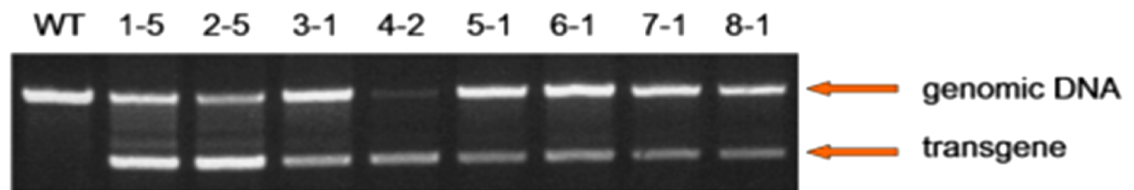
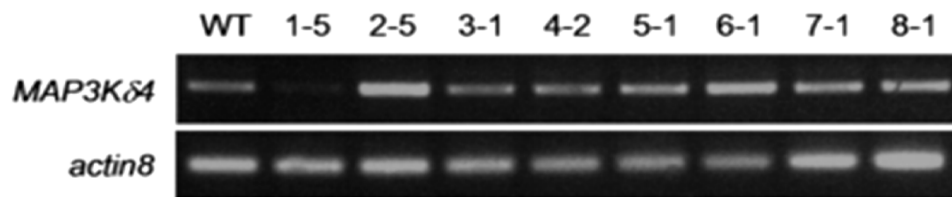


Genomic PCR

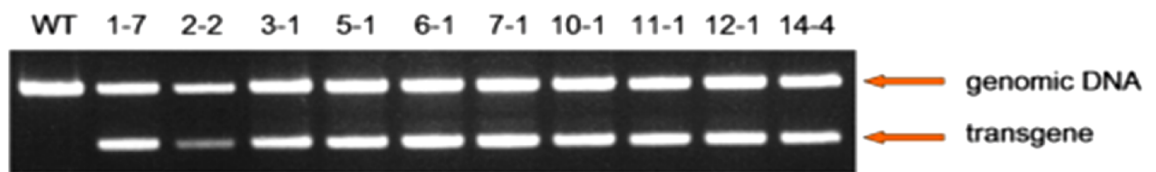


RT-PCR

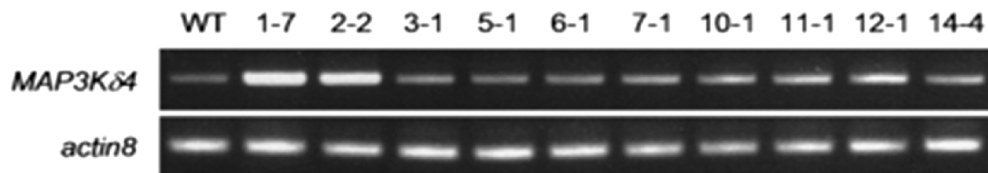


Supplementary Figure 1. Confirmation of transgenic 35S:MAP3 δ 4 lines by genomic PCR (top) and RT-PCR (bottom). Genomic DNA and total RNA were extracted from 7-day-old seedlings of transgenic 35S:MAP3 δ 4 plants for genomic PCR and RT-PCR.

Genomic PCR



RT-PCR



Supplementary Figure 2. Confirmation of transgenic 35S:MAP3K δ 4KN lines by genomic PCR (top) and RT-PCR (bottom).

Genomic DNA and total RNA were extracted from 7-day-old seedlings of transgenic 35S:MAP3K δ 4KN plants for genomic PCR and RT-PCR.