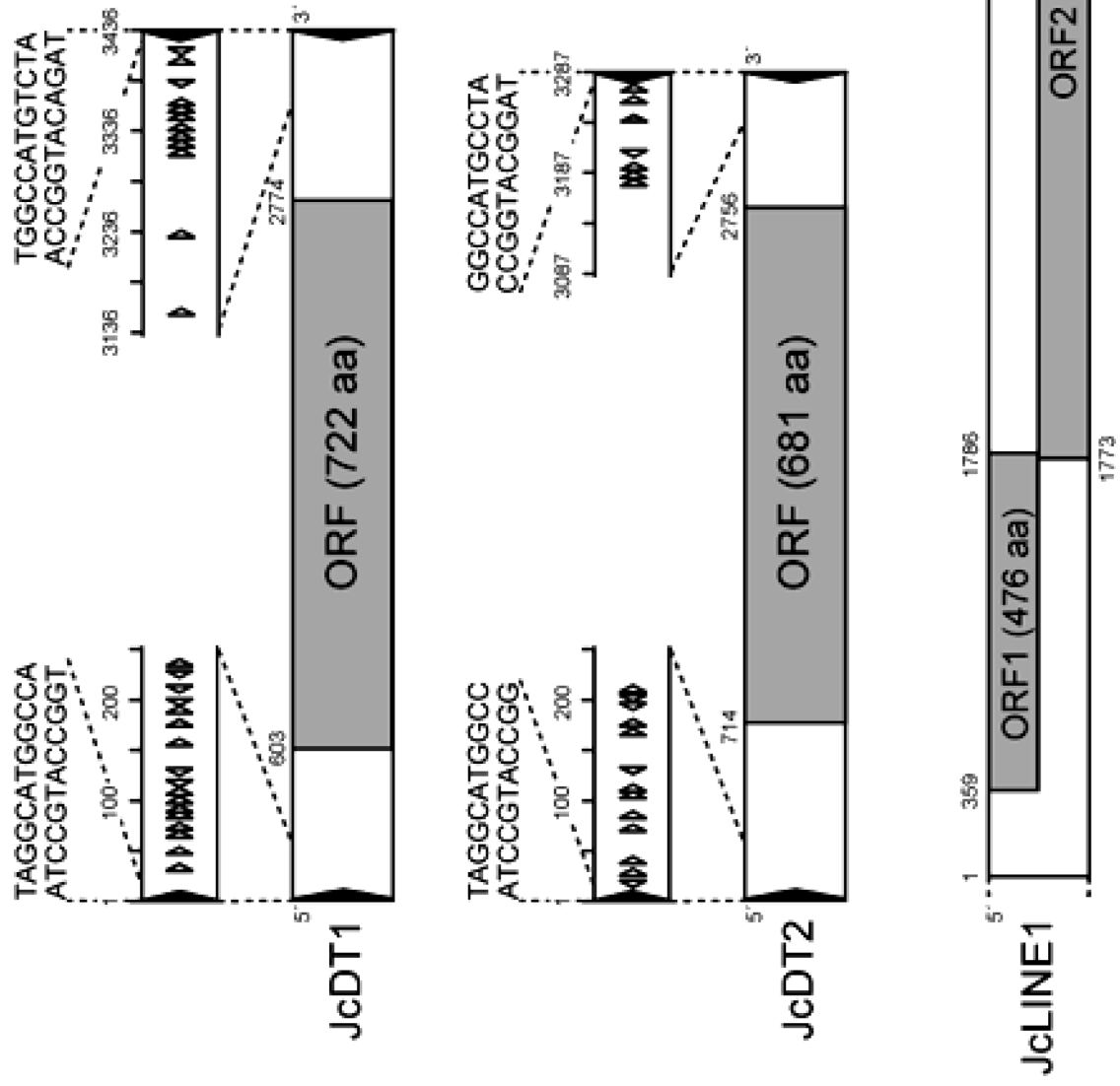


Supplemental Figure S1. The distribution of contig lengths in JAT_r3.0 and JAT_r4.5. The percentages of contigs in previous assembly (JAT_r3.0) and updated assembly (JAT_r4.5) in the length ranges are shown with blue (JAT_r3.0) and red (JAT_r4.5) bars.



Supplemental Figure S2. Schematic structures of *iatropa* transposable elements. TIRs of *JcDT1* and *JcDT2* are shown in nucleotide sequences and closed triangles, and hexamer motif sequences of them are shown in open triangles. The 3' terminal sequence of *JcLINE1* is indicated by a closed square. Figures indicate nucleotide positions in base pairs.