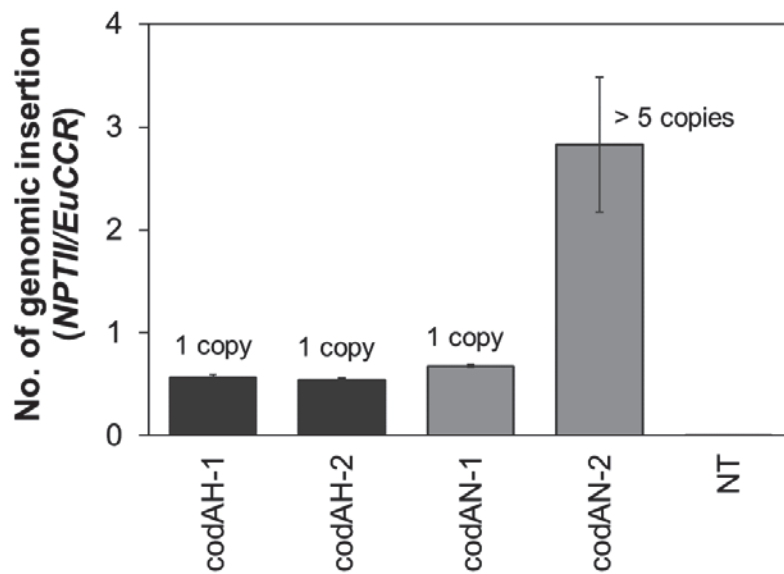
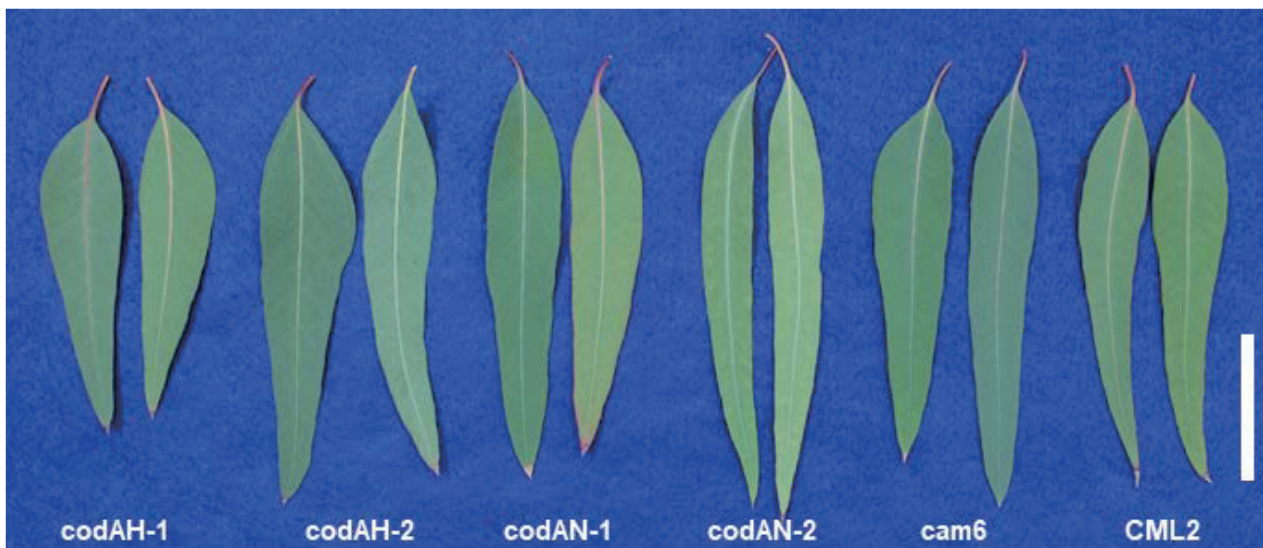


Supplementary Figure S1 Temperature condition. (A) Three-year average temperature in the screen house from 2014 to 2016. (B) Three-year average outside temperature monitored by AMeDAS post in Tsukuba/Tateno from 2014 to 2016. Error bar: Standard error.



Supplementary Figure S2 Estimated copy number of genomic integration of T-DNA by qPCR.

The specific sequences for *NPTII* and endogenous *Cinnamoyl-CoA reductase (EcCCR)* were amplified from genomic DNA extracted from young leaves of respective transgenic and non-transgenic trees. The ratio of the genomic integration of the transgene was estimated based on the ratio of the quantity of *NPTII* to that of the endogenous *EcCCR* gene. Error bar: Standard error.



Supplementary Figure S3 Leaf morphology of transgenic and non-transgenic clones. Respective two fully matured adult leaves were collected from transgenic and non-transgenic trees grown more than one year in the screened house. The left and right leaf of each clone were show the adaxial and abaxial side, respectively. Bar scale: 5 cm.